

# DATUM™ - Chamber Systems

**DATUM™** chamber systems are manufactured in one piece sections by rotational moulding for strength and rigidity. The system is made up of single stacking sections which can be stacked up to three sections high. Each section has pre-trepanned duct entry profiles for ease of pipe insertion. The chamber sections are manufactured to comply with NJUG guidelines, using 110 mm duct two chambers will give 463 mm depth of cover (typical of footway requirements) and three sections will achieve the required depth for under a road (793 mm).

Chamber Sizes compatible with IDS Elite composite covers

Code	Clear Opening (mm)	O/all Dim (mm)	Depth (mm)	Entry Points
MC1	275 x 295	374 x 394	380	8
MC2	450 x 300	545 x 390	380	10
MC3	450 x 450	550 x 550	380	12
MC4	600 x 450	690 x 545	380	14

Raiser Units

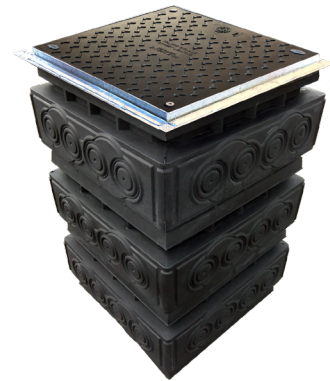
MC2/R	450 x 300	545 x 390	250	-
MC3/R	450 x 450	550 x 550	250	-
MC4/R	600 x 450	690 x 545	250	-
MC5/R	600 x 600	680 x 680	250	-



Assembled



Assembled with Raiser



Assembled with Cover

## DATUM™ Non-Structural Chamber

### Features:

- High strength and rigidity
- Tapered interlocking skirt for stacking integrity
- Precision duct entry cut-outs
- Designed to ensure NJUG recommended depths of cover
- Cover and frame height and tilt adjustment
- Corrosion resistant
- Manufactured from 100% recycled and recyclable material
- Easy one way fit and installation
- Lightweight system conforms to HSE recommendations
- Single wall design.
- IDS Elite composite covers & frames designed to suit