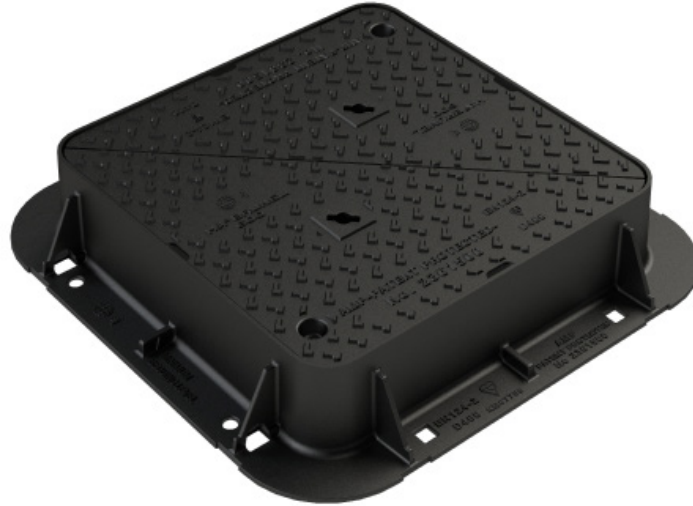




HA² BRUNEL 600 HL1 Technical Sheet



Material

EN GJS 500-7 Iron
ISO 1083 / EN1563

HA² BRUNEL is a range of Highway access covers and frames. The HA² BRUNEL range has been designed to BS EN 124-2:2015, CD534 and BS 7903. The covers have undergone extensive trialling and testing including a 3 months road trial in which they were subjected to 3000 vehicles a day at an average speed of 80 Kmh. The HA² BRUNEL range is compliant with RSTA ADEPT Code of practice for Ironwork systems Installation and Refurbishment.

Code	Clear Opening (mm)	O/all Frame (mm)	Frame Depth (mm)	EN 124	Description	Weight (kg)	PSRV
BRUNEL 600 HL1	600 x 600	786 x 786	150	D 400	Ductile Iron, D. Tri Lids Cover & Frame.	87	82

Features

The HA² BRUNEL range includes new and innovative features designed to maximise performance in the most demanding environments including:

- CD534 Compliant (Formerly HA104/09.)
- BS 7903 Compliant.
- EN 124:2: 2015 Load Class D 400.
- BSI Kitemark.
- Minimum Mortar Line Indicator.
- AMP™ patented anti-movement technology frames.
- Unique V-Seating to increase bearing area & limit lateral movement.
- Anti-Dislodge Keyways for safe operation.
- Optional - Safety Grids, Sealing Plates, Badging
- Innovative Frame Levelling System.



V-Seating



4L® Design Anti Slip Top Plate



Locked CHC & Cage Nut



Anti-Dislodge BS Keyways



Cover Locking Point